

NFC SCANNER | PASSIVE REPEATER USER GUIDE

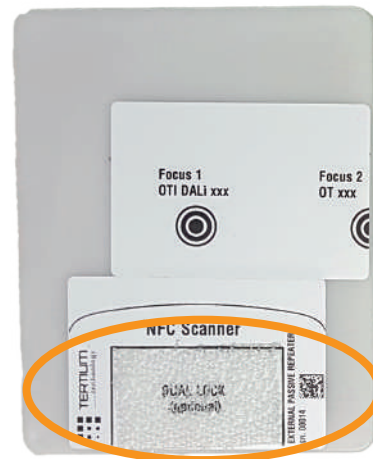
Step 1

Stick one of the provided Velcro fasteners on the NFC Scanner.



Step 2

Stick the other one Velcro fasteners on the marked DUAL LOCK area of the NFC Passive Repeater.

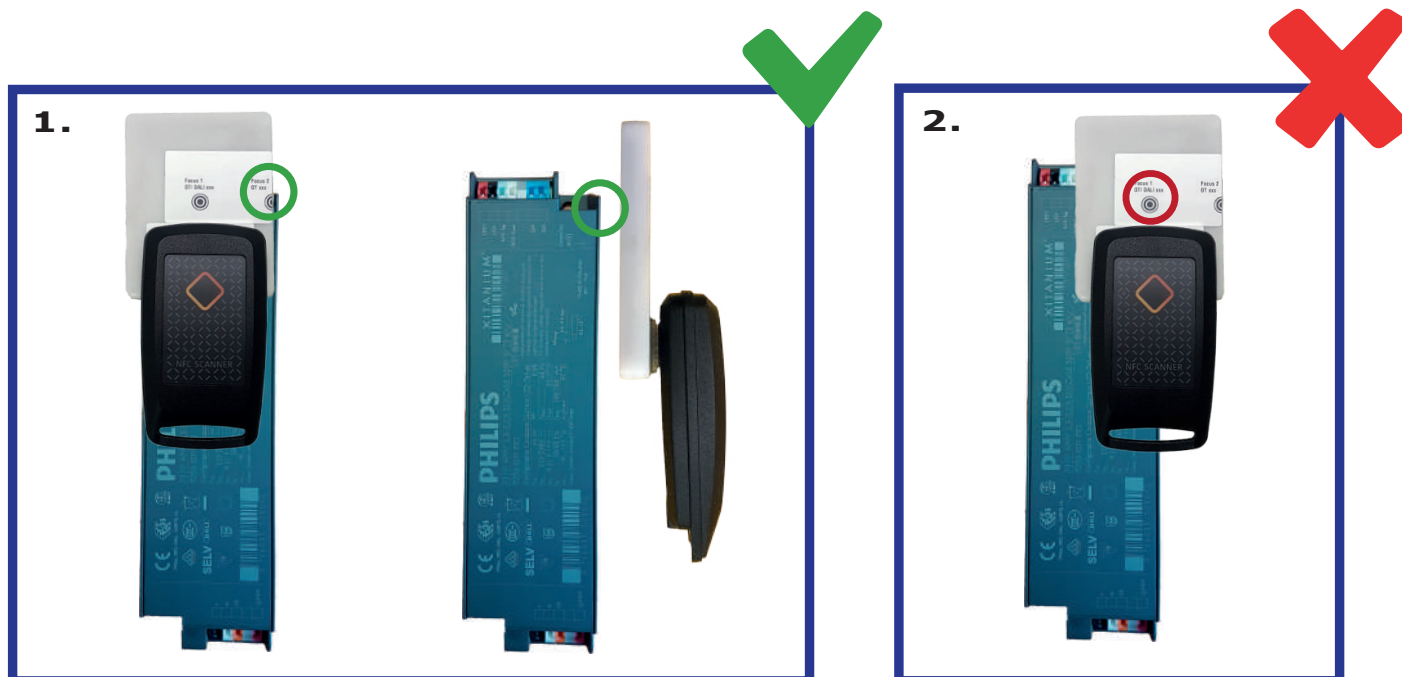


Step 3

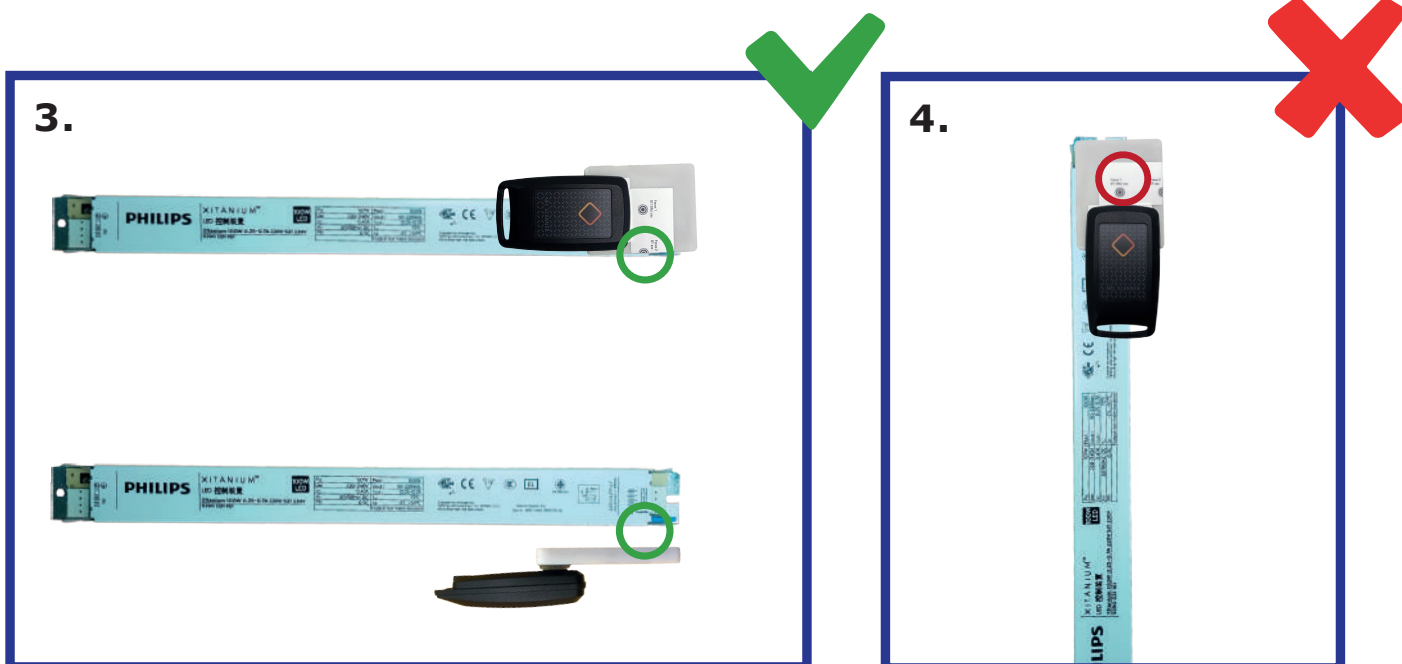
Use the Velcro fasteners to attach the NFC Scanner to the NFC Passive Repeater.



HOW DO YOU READ LED DRIVER CORRECTLY?



For optimal reading of LED drivers using NFC Passive Repeater, the reader must be positioned in "edge reading" over the NFC area of LED driver, in correspondence with "Focus 2" on the label, or sideways from the NFC area logo, as shown in figure 1.



For optimal reading of LED drivers using NFC Passive Repeater, the reader must be positioned in "edge reading" over the NFC area of LED driver, in correspondence with "Focus 2" on the label, or sideways from the NFC area logo, as shown in figure 3.

HOW DO YOU READ LED DRIVER CORRECTLY?



For optimal reading of LED drivers using NFC Passive Repeater, the reader must be positioned sideways from the NFC area logo, as shown in **figure 5**.